

45/163

# LANTANA PINES - PLAT NO. 2

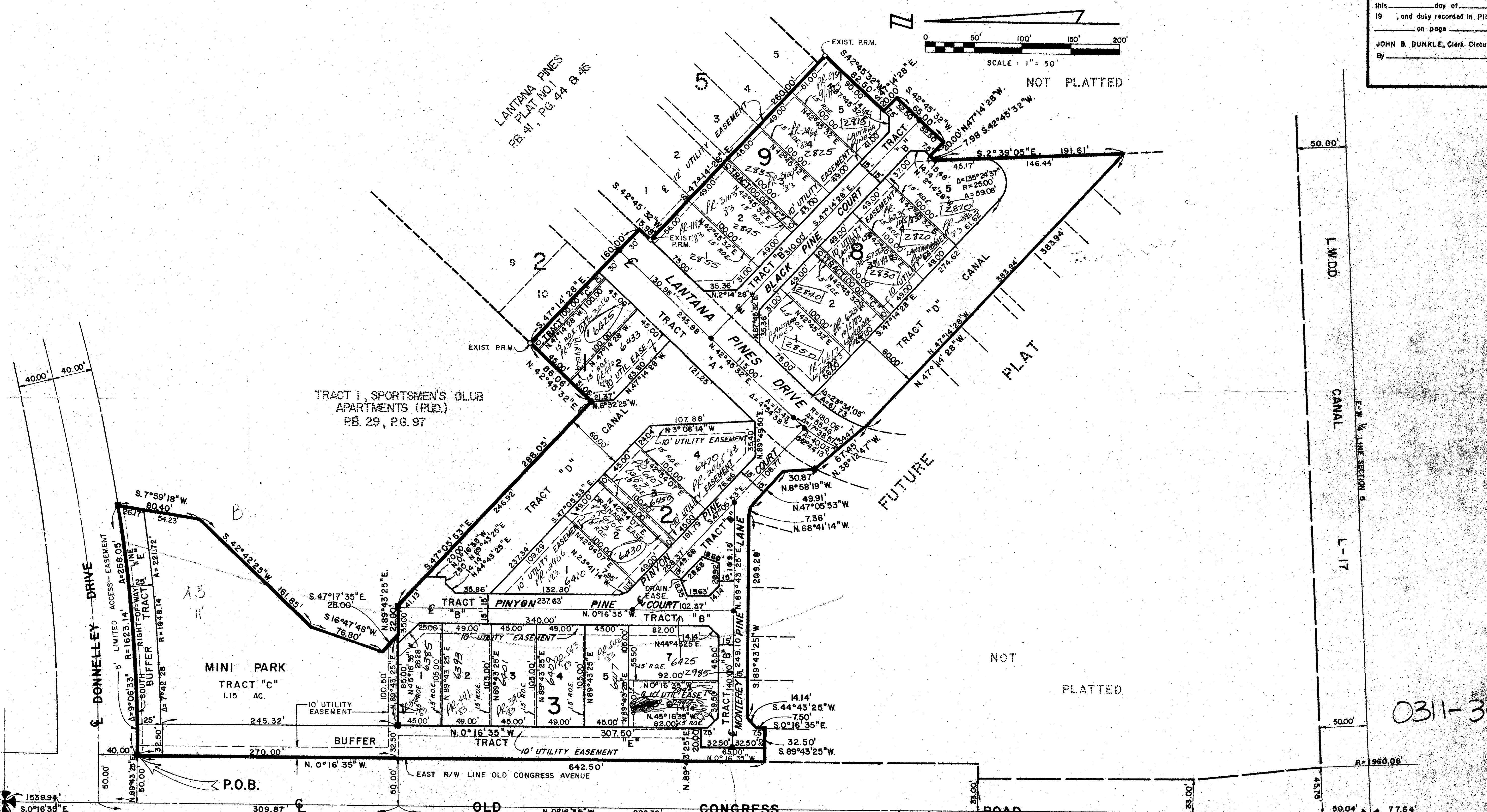
## SPORTSMEN'S CLUB - P.U.D.

### IN SECTION 5, TOWNSHIP 45 SOUTH, RANGE 43 EAST PALM BEACH COUNTY, FLORIDA

BEING A REPLAT OF A PORTION OF TRACT 1, SPORTSMAN CLUB APARTMENTS, P.U.D. AS RECORDED IN PLAT BOOK 29, PAGE 97 AND A REPLAT OF A PORTION OF BLOCKS 1 AND 2 OF LANAIR PARK, AS RECORDED IN PLAT BOOK 21, PAGE 58, PUBLIC RECORDS OF PALM BEACH COUNTY, FLORIDA

# 163

STATE OF FLORIDA }  
COUNTY OF PALM BEACH }  
This Plat was filed for record at \_\_\_\_\_ M.  
this \_\_\_\_\_ day of \_\_\_\_\_  
19 \_\_\_\_\_, and duly recorded in Plat Book No. \_\_\_\_\_  
on page \_\_\_\_\_  
JOHN B. DUNKLE, Clerk Circuit Court  
By \_\_\_\_\_, D.C.



NW. COR. SECTION 5-45-43

(POINT OF COMMENCEMENT)

ABANDONED 1-26-83 O.R.B. 3869 PGS. 1019 - 1022

SUBDIVISION #  
BOOK 45 PAGE 163  
FLOOD ZONE 1-B FLOOD MAP # 175B  
QUAD # 19 ZONING  
SE ZIP CODE 33462  
PUD NAME

45/163 *Peter Jones*  
**ROSSI AND MALAVASI**  
ENGINEERS, INC.  
WEST PALM BEACH,  
FLORIDA  
**LANTANA PINES**  
**PLAT NO. 2**  
IN 2 SHEETS SHEET NO. 2

NOTE: 1' ROE INDICATES "ROOF OVERHANG EASEMENT"  
Date: JANUARY, 1983  
Designed: R. ANDERSON  
Drawn: C. GOSS  
Checked: \_\_\_\_\_  
Scale: 1" = 50'  
Job No.: 3226-82  
File No.: \_\_\_\_\_